



Upgrading SafeCheck o8 firmware

The following document is intended to help upgrade the firmware on the Supernova and Europa testers.

Before performing an upgrade it is recommended that the test results are downloaded and that both memory locations are cleared.

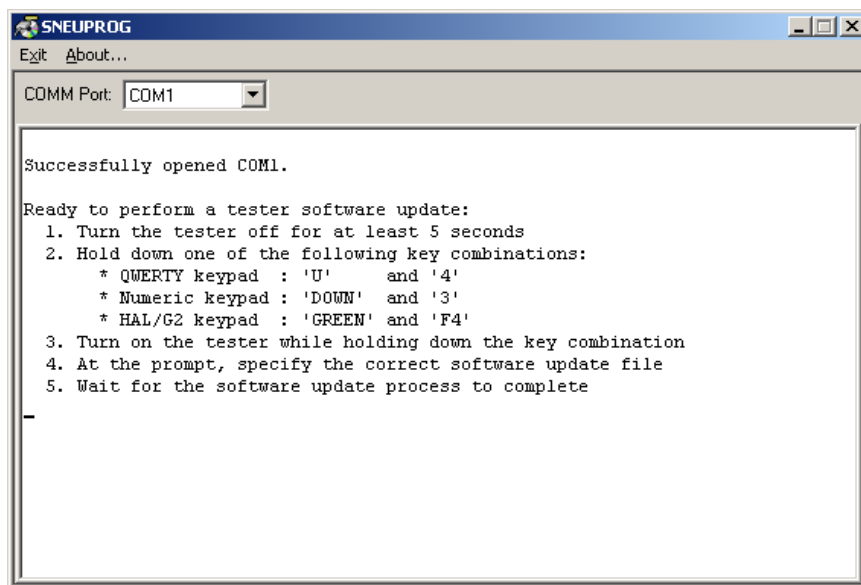
Ensure that you have the latest firmware upgrade (Version SCK8_UK.290c) this was supplied in the download, please ensure you have unzipped all files.

A dialog box will ask where you want the downloaded files to be extracted to by clicking on the 'Browse' button; select a directory where you would the files to be located.

Click the 'Unzip' button; this will extract the downloaded files to the required location.

Once downloaded, run the included EXE file, SNEUPROG..

Use Windows Explorer to locate the files and run the SNEUPROG program.

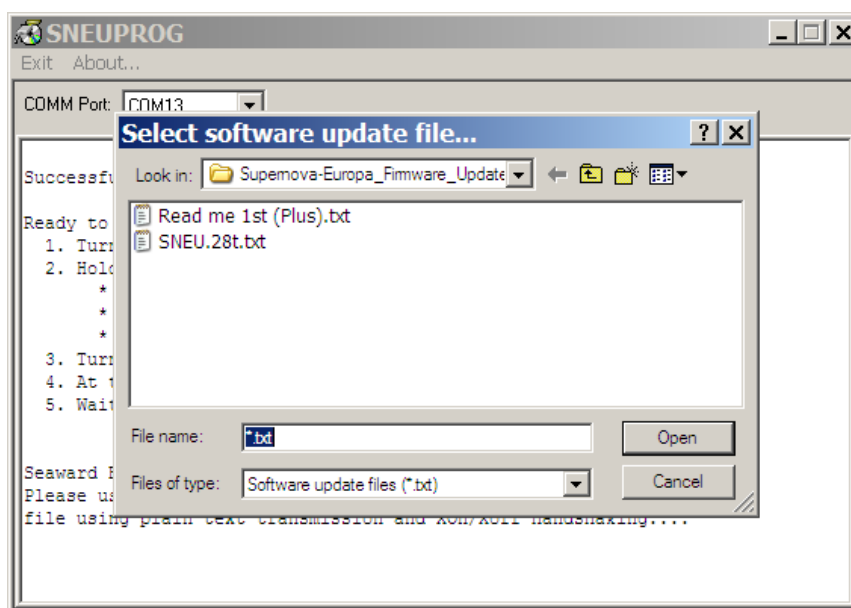


To update the tester;

- 1)** Firstly Ensure the Tester is switch off
- 2)** Connect the tester to the PC using the uploaded/download RS232 lead - this **will not work** with a USB / RS232 adaptor placed in line (note; a normal upload to the Supernova/Europa will work using the Seward USB adaptor). Part Number 194a919, Originally supplied with your Safecheck o8, the cable used for download.



- 3) On the SNEUPROG select the COMM port which the tester will be connected to, this is often COM Port 1 when a direct connection is made
- 4) As instructed on the Program. Hold down keys U and 4 on the Safecheck o8 then turn the tester on
- 5) If the tester is successfully detected and communication between PC and Tester are initiated, then a 'Select software update file' dialog box is displayed.



- 6) Select the firmware version from the list, in the above image the SNEU.28.txt is the firmware. For this update ensure you have version SCK8_UK.29oc
- 7) The firmware upgrade process will now begin.

Do not switch off or disconnect the tester during the upgrade.

- 8) When the upgrade is complete a message will be displayed indicating that the upgrade has been successful. If the upgrade was not successful then repeat the process again.
- 9) The tester is now upgraded. Disconnect the tester from the PC and switch off the tester. The next time the tester is powered it will be running the upgraded firmware.