



SEAWARD

TESTED. TRUSTED... WORLDWIDE.

Desk Test n Tag Utility



User Manual

Table of Contents

System Requirements	3
1.0 Introduction	3
2.0 Running the Utility	4
3.0 Updating the Printer Firmware (All Label sizes)	5
4.0 Configuring the Tester Type (All Label sizes)	6
5.0 Configuring the Pass and Fail Logos (Large Labels Only)	7
6.0 Printing Test Labels (All Label sizes)	10
7.0 Changing the Print Density - Optional (All Label sizes)	10
8.0 Frequently Asked Questions	11
9.0 Example Label Types	12
10.0 Accessories and Spare Parts	13
11.0 Contact Addresses	13

(c) Copyright 2017

All rights reserved. Nothing from this may be copied, or made public in any form or manner, either electronically, mechanically, by photocopying, recording, or in any manner, without prior written consent from SEAWARD Electronic Limited. This also applies to accompanying drawings and diagrams.

Due to a policy of continuous development SEAWARD Electronic Limited reserves the right to alter the equipment specification and description outlined in this publication without prior notice and no part of this publication shall be deemed to be part of any contract for the equipment unless specifically referred to as an inclusion within such contract.

System Requirements

- 1 Windows 7, Windows 8, Windows 10
- 2 Desktop set to a resolution of at least 1024x768
- 3 USB port.

1.0 Introduction

The Desk Test n Tag Utility allows the user to download a logo file from a PC into the memory of the Desk Test n Tag printer. Once this is done, the logo will be printed onto every Test Tag that is output from the printer. If the user requires a different logo then they can simply download the new logo file in the same way and override the original logo.

This facility enables the user to customize the Test Tags to their needs as well as identifying the tagged item as electrically safe. This means that, apart from identifying the tested item, the tag can be used to identify the owner and / or the test service provider.

This document has been produced to aid in configuring the Seaward Desk Test n Tag Printer with the latest version of the Desk Test n Tag Printer utility, version 3.2, using a USB Connection.

This utility can be used to connect to the latest Desk Test n Tag Printers (version 2) via a USB to USB lead (supplied with printers) or older Desk Test n Tag Printers (version 1) using a USB to Parallel lead (not supplied).

The scope of this document includes;

- Sending the correct configuration file (firmware)
- Setting the correct instrument settings (tester)
- Changing and creating Pass / Fail Logos
- Printing labels and changing the print density

Equipment Required

- PC with spare USB port
- USB Cable Supplied with Printer (for version 2 Printers only*)
- USB to Parallel Converter, **note this is not supplied with the printer** (for version 1 Printers*)
- Desk Test n Tag Printer and Power Cable
- Desk Test n Tag Utility
- *Version 1 Printers are not supplied with USB - B connection

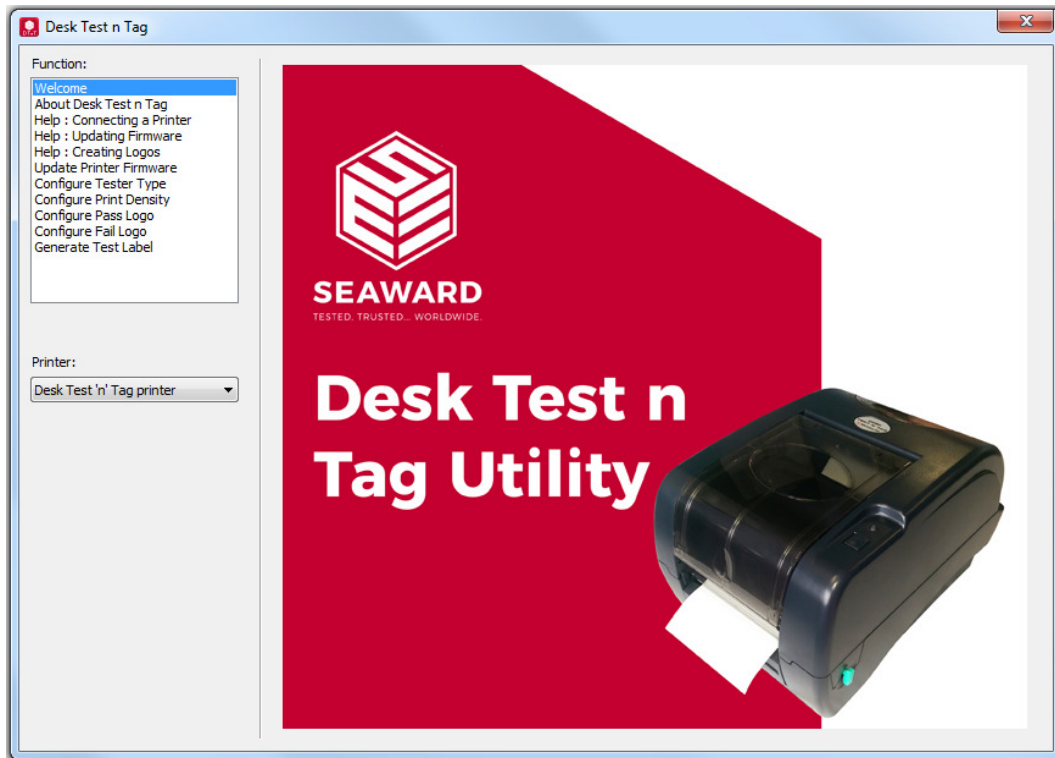
The Configuration Utility can be downloaded from the Seaward Website using the following URL.

www.seaward.co.uk/desktntutility3

Note, this will download as a zipped file, which will need to be unzipped. Within this zipped file are the Utility, firmware files and standard labels.

2.0 Running the Utility

Run the program and the following screen will be displayed.



Connecting the Printer

In order to change configuration the Desk Test n Tag printer must be connected to a PC via the supplied USB Cable or by using a USB to Parallel Converter cable. On the first install Windows will install relevant USB Generic Printer drivers.

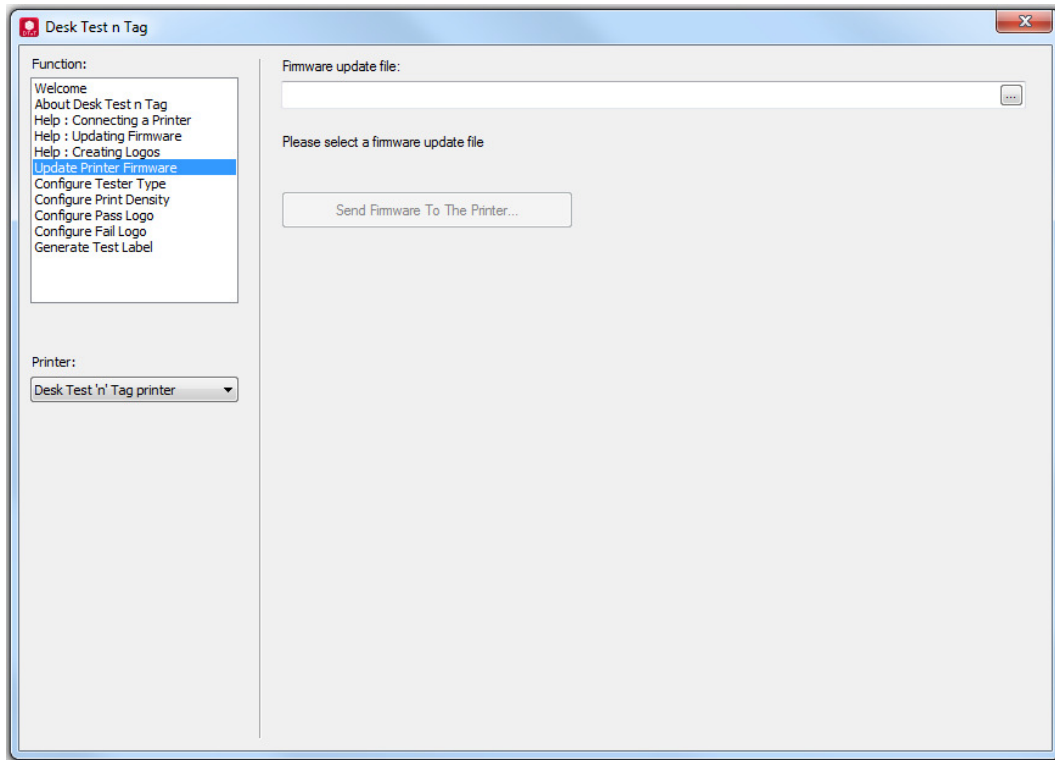
Once connection has been established the Printer window will display the following:


Desk Test n Tag Printer (USB connection) or USB to Parallel Adapter.

3.0 Updating the Printer Firmware

The first stage of the operation is to upload the configuration file required;

Step 1 - Select **Update Printer Firmware** from the Function window.



Step 2 – Find the directory containing the configuration files, using the browse window by clicking the icon , then navigating via the directory path window to the folder containing the firmware files.

Step 3 – Click the required file, this should read DeskTnTV3.0 XXXX.tpl (Please see section 8.0 Frequently Asked Questions, for relevant firmware versions).

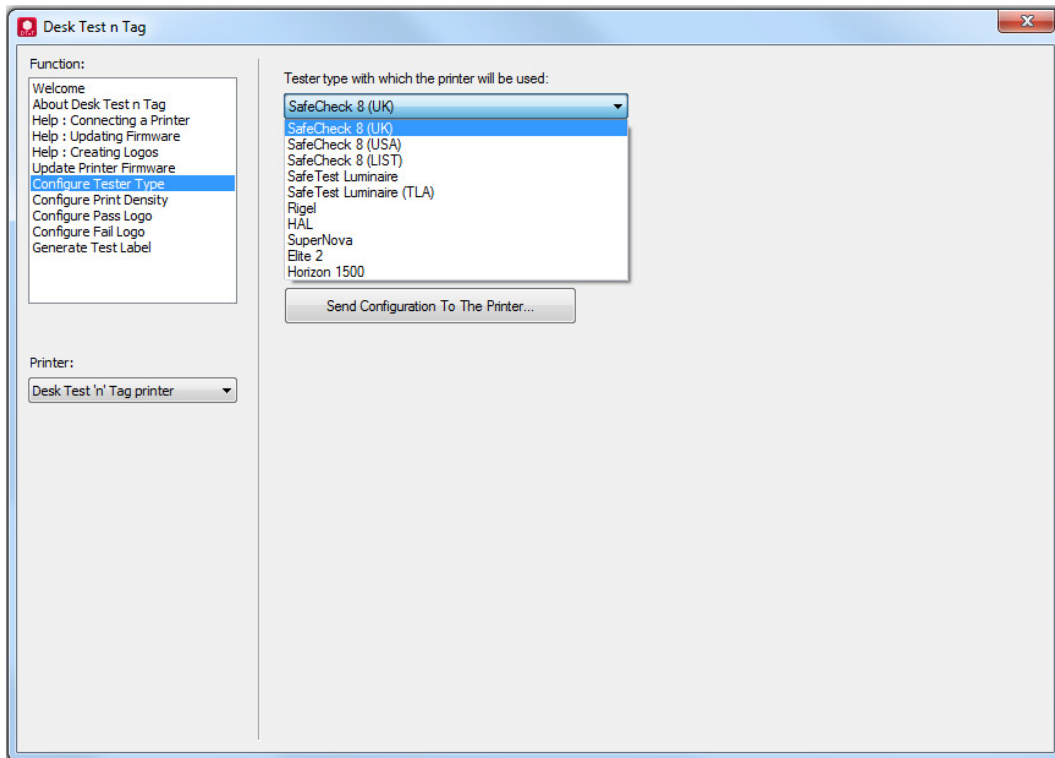
Step 4 – The button labelled **Send Firmware to the Printer** will become active, select this and follow the onscreen instructions to send the file to the printer.

The printer will print a label saying “....NOW IN PROGRAMMING MODE”. Wait for the LED's on printer to stop flashing.

Important: Switch the printer off, then switch on again.

4.0 Configuring the Tester Type

Step 1 - Select **Configure Tester Type** from the Function window



Step 2 – Use the drop down list to select the required printer settings for the instrument you are using;

Note (1), for users of Supernova / SafeCheck 08/ STML that want to print the measured results, use the **SafeCheck 8 (List)** format.

Note (2), for users of the STM/L (Safetest Manufacturing), please use the **SafeCheck 8** settings.

Step 3 – Press the button labelled **Send Configuration to the Printer** to update the settings.

The printer will print a label saying**NOW IN PROGRAMMING MODE**. Wait for the LED's on printer to stop flashing.

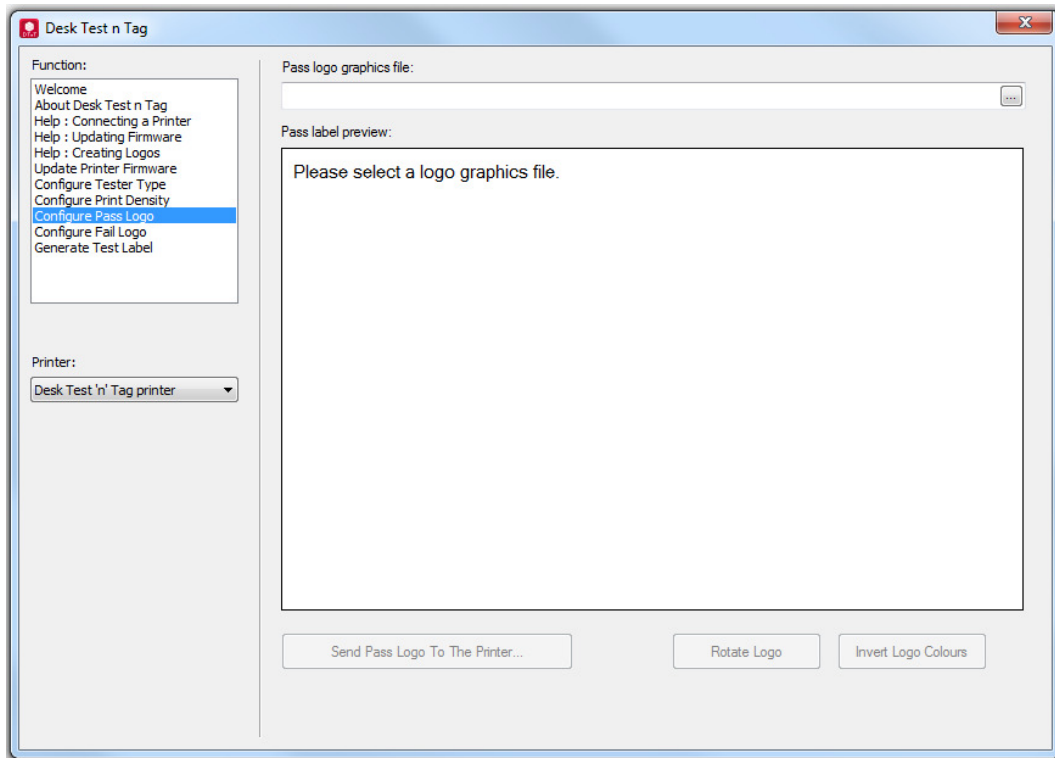
Important: Switch the printer off, then switch on again

Note: If using any of the small label firmware versions, please progress to Section 6.0.

5.0 Configuring the Pass and Fail Logos

The printer has the ability to store two logo files, one for a Pass and another for a Fail condition.

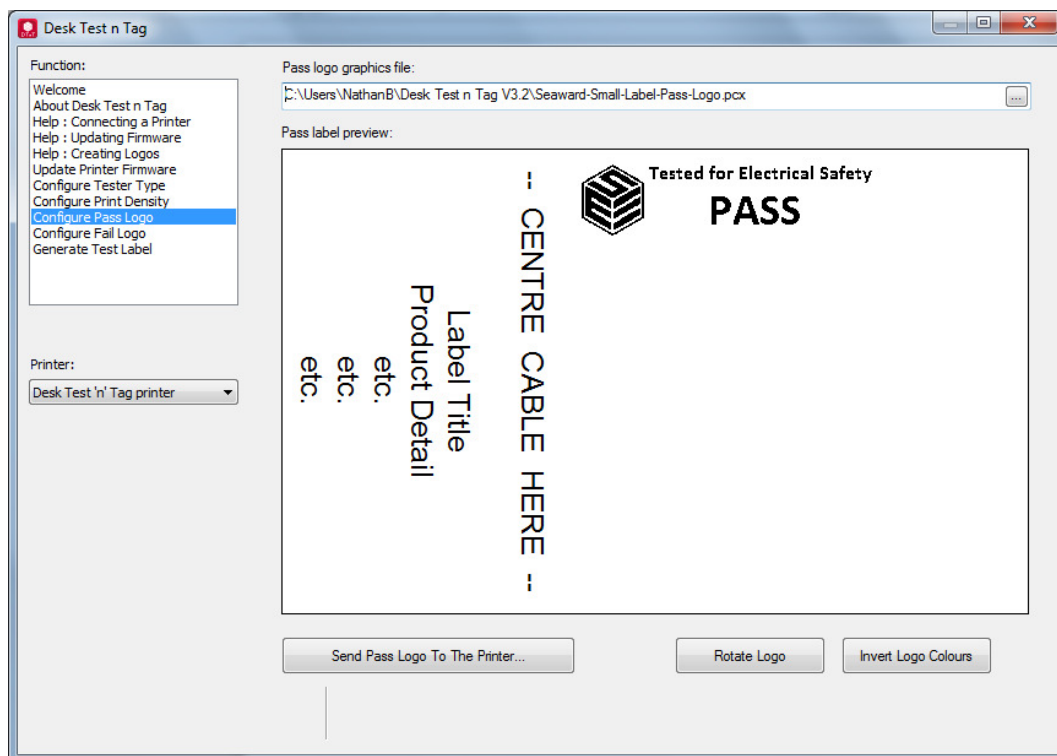
Step 1 - Select the option **Configure Pass Logo** from the function box.



Step 2 – Click the icon  in the Pass Logo Graphics File window, then at the resulting search screen find the logo file required and double click to select.

Step 3 – The logo will now be displayed in the Pass Label Preview window, from here it is possible to rotate the logo to the correct orientation using the **Rotate Logo** button.

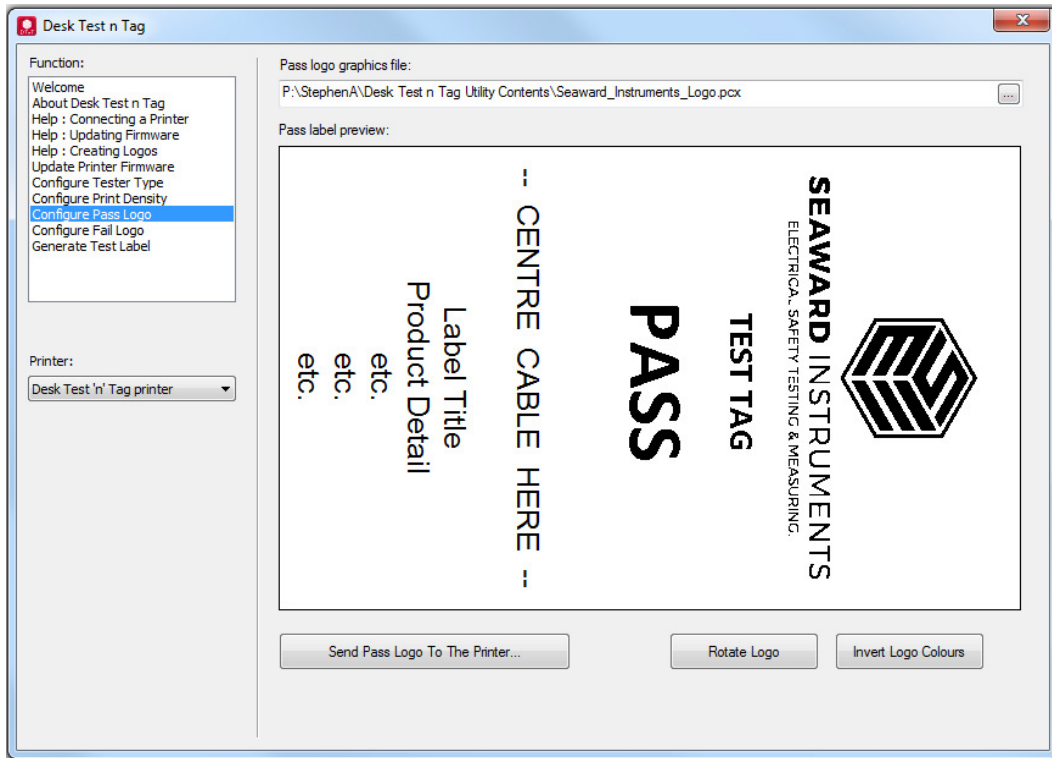
Note: The correct orientation for the SMALL Label Logos (Pass and Fail) is shown in the next example screenshot. If the logo is not in this orientation it will over print the test of the label



Step 4 (optional) – The logo colours can be inverted if desired (black to white or white to black), by pressing the **Invert Logo Colours** Button.

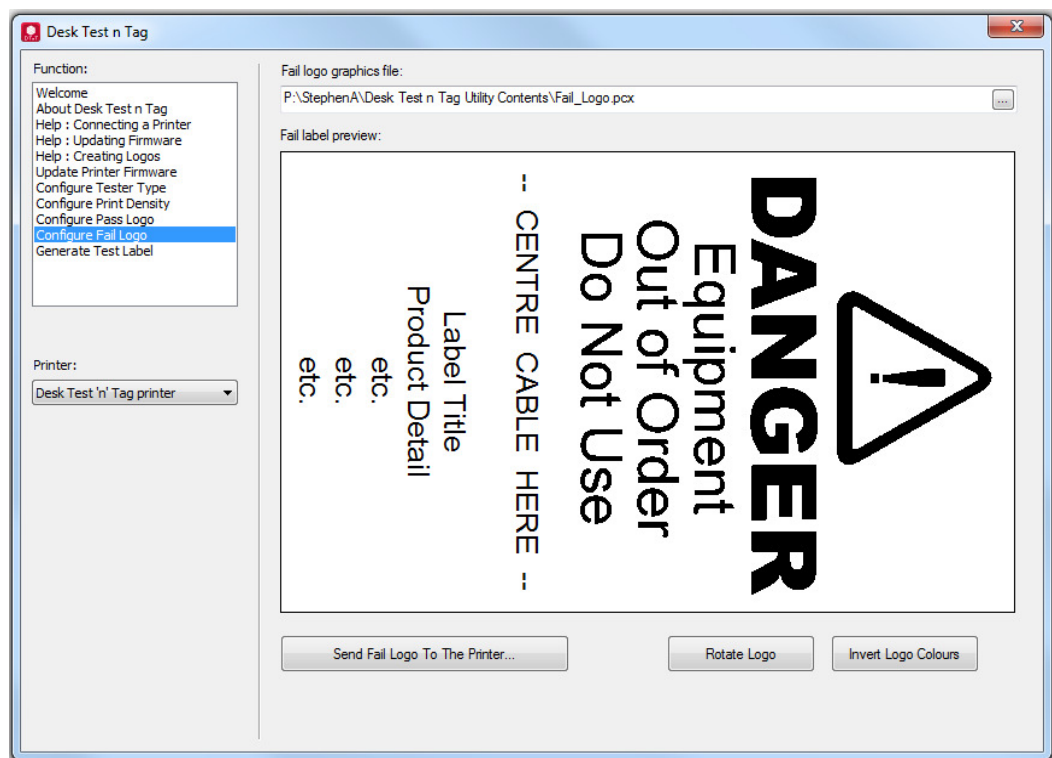
Step 5 - The **Send Pass Logo to the Printer** button will become active, press this to send the logo to the printer.

The printer will print a label saying**NOW IN PROGRAMMING MODE**. Wait for the LED's on printer to stop flashing.



Important: Switch the printer off, then switch on again

Repeat the process for the Fail logo selecting the **Configure Fail Logo** option from the Function Window.

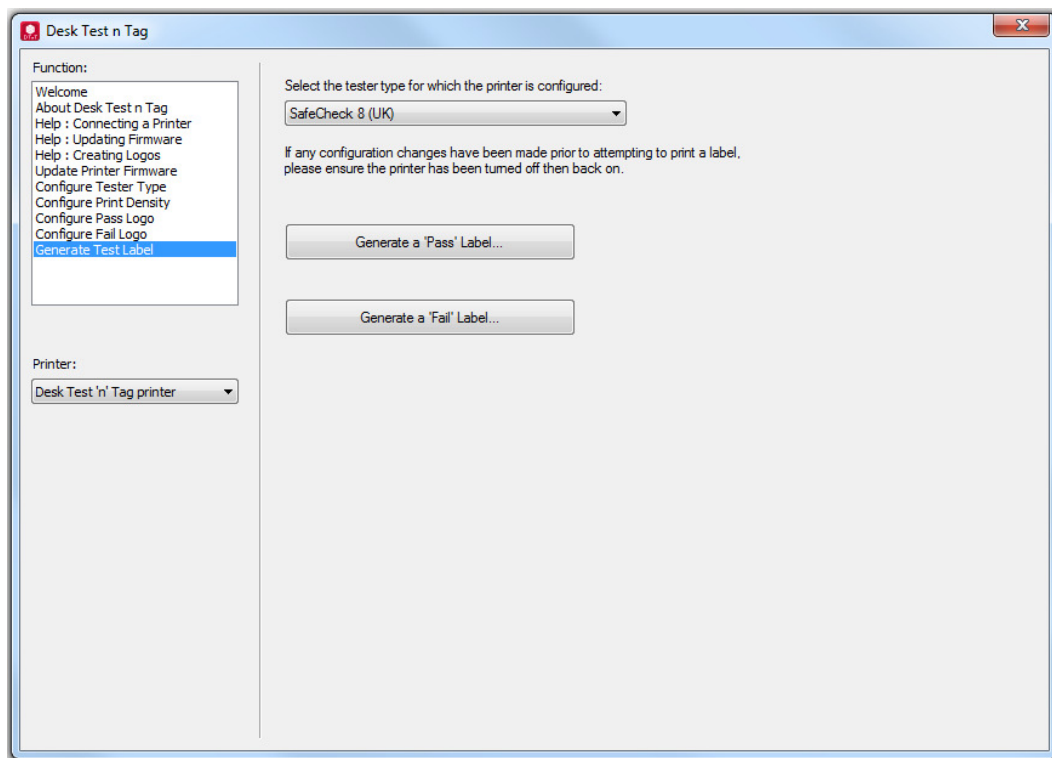


6.0 Printing Test Labels

Once the labels have been fully configured it is possible to print a test label to view and confirm the label is set up correctly and as intended

Note, if the printer has been configured, please make sure it is switched off and then switch on again before attempting to generate test labels.

Step 1 – From the Function Window, select **Generate Test Labels**



Step 2 – Ensure you choose the same Printer configuration from the drop down list as those sent to the Printer when updating the firmware. If you have loaded a small label firmware version, please select **SafeCheck 8** from the dropdown list.

Step 3 – Press the button labelled **Generate a 'Pass' Label** and observe that a Pass Label is printed, ensure that the logo is printed as expected.

Step 4 - Press the button labelled **Generate a 'Fail' Label** and observe that a Fail Label is printed, ensure that the logo is printed as expected.

7.0 Changing the Print Density - Optional (All Label sizes)

If the quality of print is not as expected, or the labels appear to stick, it may be likely that the density requires changing. Select **Configure Print Density** and use the Print Density slider to select between 1 and 15. Press the **Send Density Setting To The Printer** button to send the settings to the Printer.

8.0 Frequently Asked Questions

What Firmware should I use?

The firmware type to use will depend upon the size of label used and the test instrument to be printed from.

The Desk Test n Tag labels come in two formats; Large and Small, and the print outputs from the instrument are fixed.

The below matrix details which firmware version can be used with which test instrument and the associated functions with each label type;

Firmware Version	Label Size (HxW)	Compatible Tester Model	Logo Upload	Retest Period Display	Test Results Label Print Option
3.0_Large_Label	100mm x 50mm	HAL Range, STML, SafeCheck08, Supernova Elite	✓		✓ (N/A for HAL Range)
3.0_Retest_Large_Label	100mm x 50mm	Supernova Elite	✓	✓	
3.0_Small_Label	35mm x 45mm	HAL Range, STML, SafeCheck08, Supernova Elite	✓		
3.0_Retest_Small_Label	35mm x 45mm	Supernova Elite	✓	✓	

What format must the Logo be?

In order to change the logo it is first a requirement to create and save the logo into the correct file type.

If you are familiar with paint or graphics programs, you can create your own logo files. If graphics are to appear in the logo space, you will need a high-resolution copy of the graphic. Print quality of at least 200 dpi resolutions and PCX format.

Note: The dimensions of the LARGE logo area are 360 pixels (W) x 360 pixels (H).

The dimensions for the SMALL logo area are 250 pixels (W) x 70 pixels (H).

Graphics must be high contrast, black and white or line art.

Tips

Open the file in Microsoft paint and choose to save as a Monochrome Bitmap prior to converting to PCX.

The PCX file size should typically be less than 15kB, any larger may not successfully load into the printer.

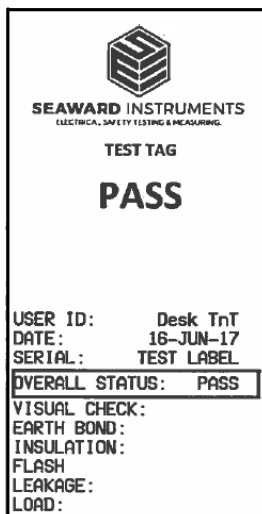
There are many websites online that will convert from a Bitmap to PCX file.

9.0 Example Label Types

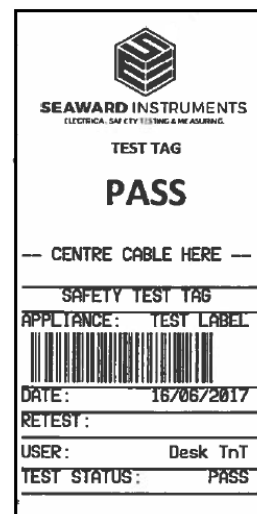
The below are examples of some of the different printed label types for reference;



Large Label Print



Large Label with Result



Large Label with Retest



Small Label



Small Label with Retest

10.0 Accessories and Spare Parts

Accessories	Part Number
Ink roll	312A952
White labels (100mm x 50mm)	312A951
Orange labels (100mm x 50mm)	312A954
Yellow labels (100mm x 50mm)	312A956
Blue labels (100mm x 50mm)	312A957
Red labels (100mm x 50mm)	312A961
Green labels (100mm x 50mm)	312A962
White labels (35mm x 45mm)	312A972
Serial printer lead	283A955
Barcode reader adapter	312A955
Safety eBase RS232 lead (PC to printer)	482A950

11.0 Contact Addresses

Seaward Electronic Ltd
Bracken Hill
South West Industrial Estate
Peterlee
Co Durham
SR8 2SW
United Kingdom

Tel: +44 (0)191 586 3511
Fax: +44 (0)191 587 0157
Email: customercare@seaward.co.uk

Seaward Group USA.
6304 Benjamin Road
Suite 506
Tampa
Florida
33634
USA

Tel: (001) 813 886 2775
Fax: (001) 813 886 2754
Email: sales@seaward-groupusa.com