



## Why should I PAT test?

The infographic below shows the impact that PAT testing and the EAWR 1989 have had on electrical safety

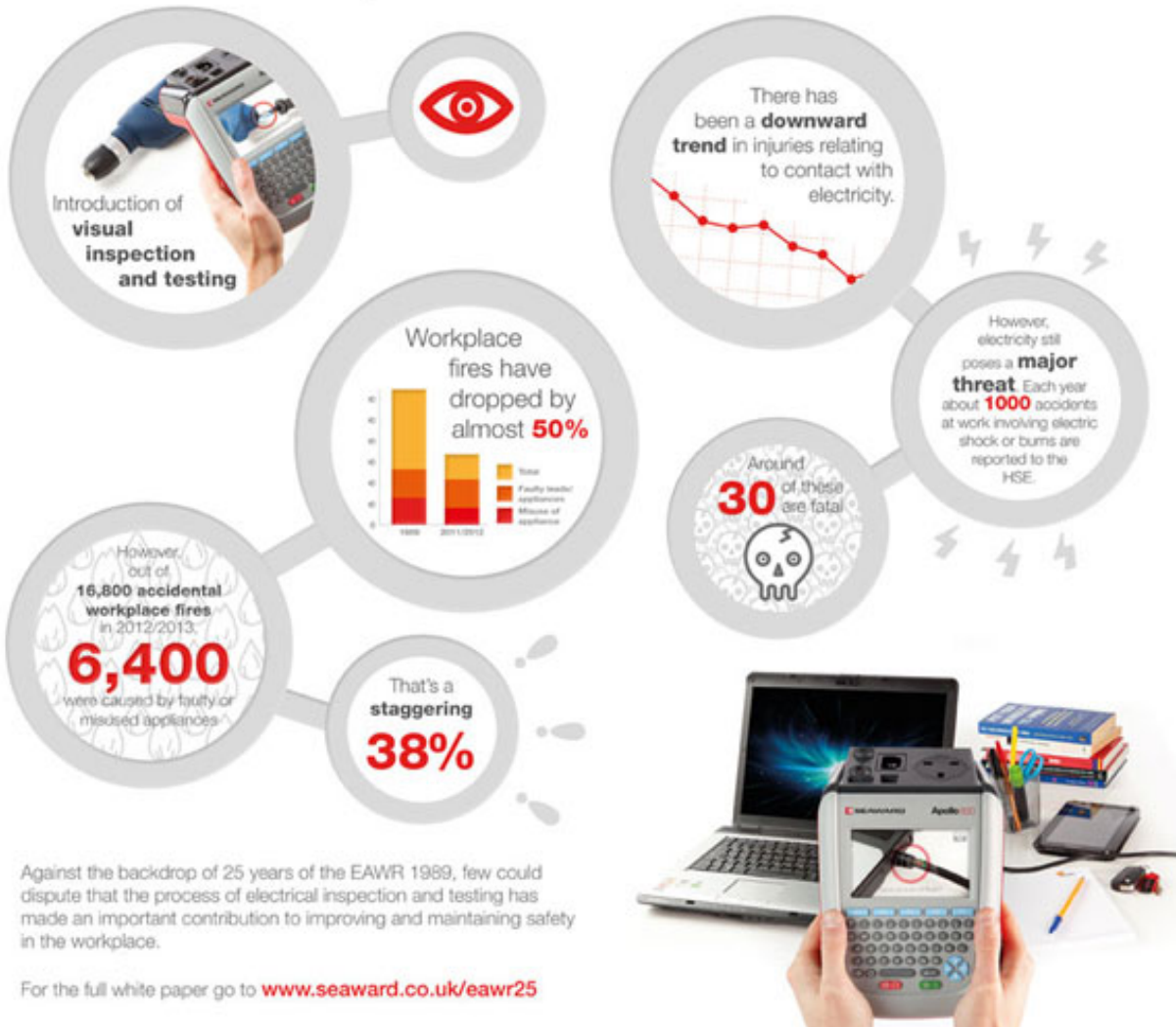
## 25 years of the Electricity At Work Regulations

Brought to you by  
**SEAWARD**

**1990** Electricity At Work 1989 comes in to force

“...As may be necessary to prevent danger, all (electrical) systems (incl equipment) shall be maintained so as to prevent, so far as is reasonably practicable, such danger...”

### Impacts of the **EAWR**



If you require more help, please contact us at  
<https://www.seaward.com/sitemap/enquiry/>.